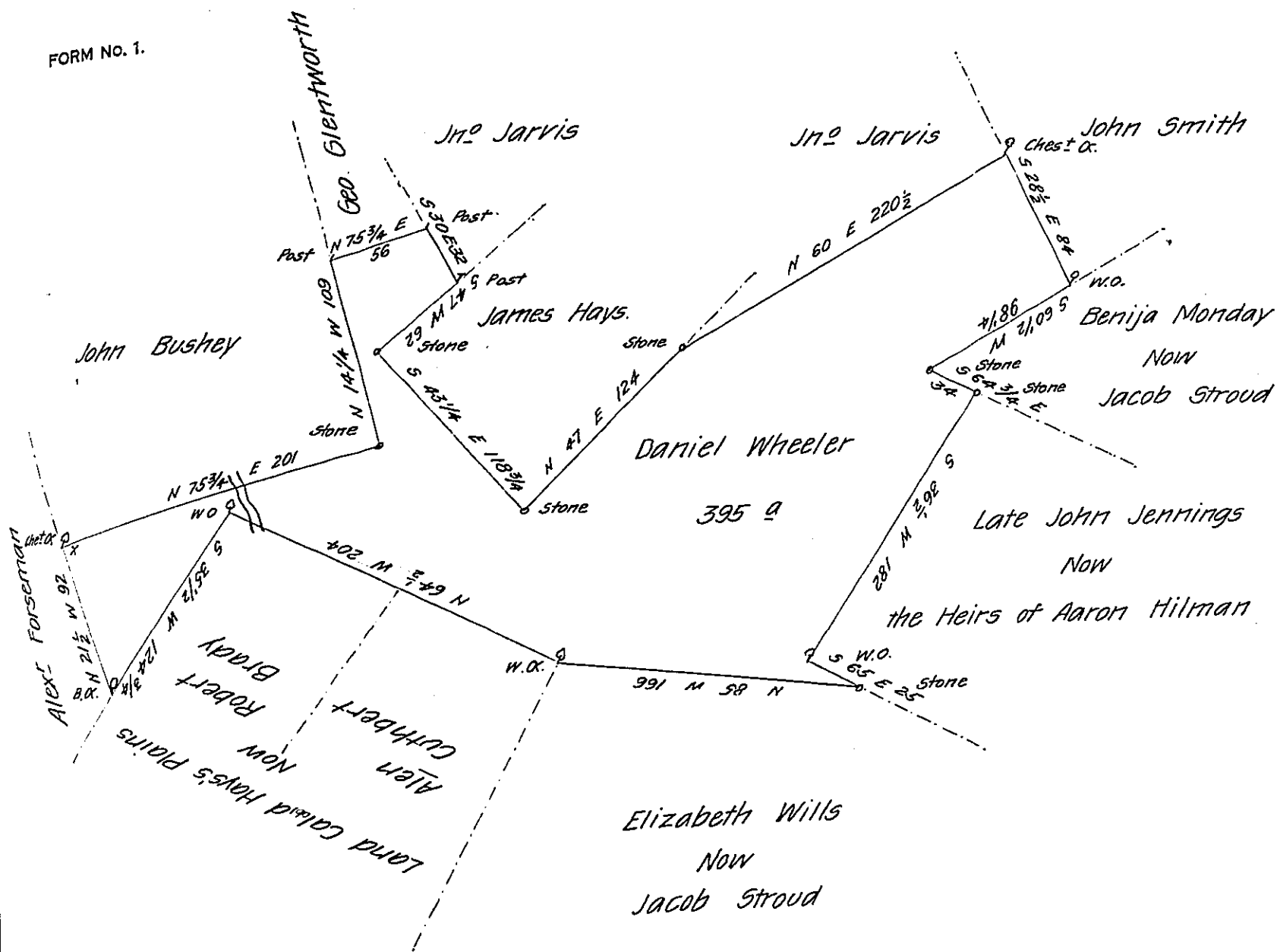


FORM NO. 1.



By virtue of a Warrant dated the 19th January 1790 Surveyed the 5th November 1795 to Daniel Wheeler the above described tract of land situate on Marshalls Creek in Middle Smithfield and lower Smithfield Townships Northampton County Containing three hundred and ^{ninety} five Acres and the Allowance of Six P. Cert &c^d

P-
Geo. Palmer D.S.

To Samuel Cochran Esquire
Surveyor General.

IN TESTIMONY that the above is a copy of the original remaining on file in the Department of Internal Affairs of Pennsylvania, made conformably to an Act of Assembly approved the 16th day of February 1833, I have hereunto set my hand and caused the Seal of said Department to be affixed at Harrisburg, this thirteenth day of June 1907

Henry Howell
Secretary of Internal Affairs.